



Profile Management

Create and manage device profiles to enforce unique policies and restriction settings tailored for various devices.



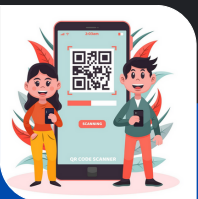
Manage Applications

Easily manage all device applications through a structured, user-friendly interface. Perform actions such as Add, Upload, and Export app data



Manage Device

Monitor and control all enrolled devices through a powerful tabular dashboard. View details like Installed Apps, Device Specs & Device Settings.



Enroll Device

Seamlessly enroll new devices into your MDM system using generated QR. Choose and assign a profile during the enrollment process.

About Us !

Our Unified Mobile Device Management (UMDM) solution is built to address the evolving needs of modern organization enabling centralized control, enhanced security, and seamless device integration.

Our mission is to provide scalable, user-friendly tools that help businesses manage their digital assets with confidence—whether operating on cloud or captive networks. From policy enforcement to real-time monitoring, we ensure your mobile ecosystem remains efficient, compliant, and protected.

Key Features

- ✓ Profile Management
- ✓ Application Control
- ✓ Geofencing
- ✓ Work Profile Management
- ✓ Device Management
- ✓ Security

UNIFIED MOBILE DEVICE MANAGEMENT



Scan for More



Contact Us

- 080-25119893
- mdm@cdot.in
- www.cdot.in



WHAT IS UMDM?

Unified Mobile Device Management (UMDM) is an enterprise solution that enables administrators to control, secure, and enforce policies on devices like smartphones, tablets, and laptops. It provides comprehensive features for device enrollment, app distribution, security policy enforcement, remote wiping, location tracking, and compliance monitoring crucial for organizations managing multiple devices, especially in regulated industries requiring strict security protocols.

Core Device Management

- ✓ Comprehensive device configuration and profiling
- ✓ Remote locking and wiping
- ✓ Real-time tracking and location mapping
- ✓ Firmware and software updates
- ✓ Device health monitoring & Battery usage optimization
- ✓ Network connectivity management
- ✓ Device inventory control

Work Profile for BYOD

- ✓ Secure separation between personal and work data
- ✓ Dedicated workspace for enterprise apps
- ✓ Policy control limited to corporate profile only
- ✓ Centralized app deployment and permissions management
- ✓ Automatic provisioning and de-provisioning of work apps
- ✓ Remote wipe of work data without affecting personal content

Application Management

- ✓ Centralized app installation
- ✓ App permissions management
- ✓ Enterprise application store deployment
- ✓ Version control and updates
- ✓ App usage analytics & App configuration management
- ✓ App security scanning
- ✓ License management

Advanced & Security Features

- ✓ Comprehensive device compliance and security enforcement
- ✓ Password and access control policies
- ✓ Malware detection and app restriction (blacklisting/whitelisting)
- ✓ Remote lock, wipe, and data protection controls
- ✓ Network and connectivity restriction policies
- ✓ Kiosk mode and Geo-fencing for controlled usage

WHY CDOT UMDM?

CDOT secured UMDM is an indigenous solution built in India to meet global standards, offering a cost-effective alternative with no recurring license dependencies. It supports flexible deployment option either as a standalone system or cloud-connected tailored to your infrastructure needs. Backed by 24/7 India-based support, CDOT secured MDM ensures reliable, locally available assistance, making it a smart and scalable choice for organizations seeking robust device management.

MAJOR USECASES

Enterprise Device Management

Banking & Finance

Police, Postal & Defense Sector

Government Agencies

Universities/ Institutions/Schools

Railway Systems

SCAN FOR MORE →